

# R407C



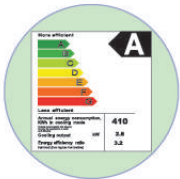
## Electronic Control

- | MPK-09CEN2 | MPK-09EEN2
- | MPK-10CEN2 | MPK-10EEN2
- | MPK-12CEN2 | MPK-12EEN2

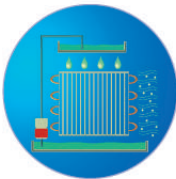
## Remote Control

- | MPK-09CRN2 | MPK-09ERN2
- | MPK-10CRN2 | MPK-10ERN2
- | MPK-12CRN2 | MPK-12ERN2

## Features



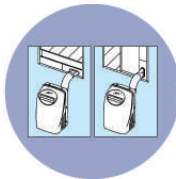
High Efficiency Up to Class A



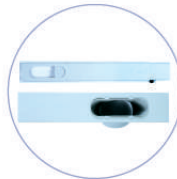
Shower Cooling System



LED Display



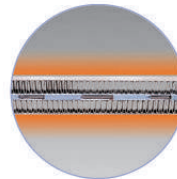
Flexible Exhaust Through the Wall or Window



Adjustable Window Slider Kit



Flexible Exhaust Hose



PTC Heater

■ Cooling Only ■ Cooling & Electric Heater

Model		■ MPK-09CEN2		■ MPK-09EEN2		■ MPK-10CEN2		■ MPK-10EEN2		■ MPK-12CEN2		■ MPK-12EEN2	
		■ MPK-09CRN2		■ MPK-09ERN2		■ MPK-10CRN2		■ MPK-10ERN2		■ MPK-12CRN2		■ MPK-12ERN2	
<b>Capacity</b>													
Cooling/Heater	Btu/h kW	9000 2.6	9000/6000 2.6/1.8	10000 3.0	10000/6000 3.0/1.8	12000 3.5	12000/6000 3.5/1.8						
<b>Electrical Data</b>													
Power Supply	V-,Hz,Ph	220-240, 50, 1		←		←		←		←		←	
Power Input	Cooling/Heater W	980		980/1800		1110		1110/1800		1350		1350/1800	
Operating Current	Cooling/Heater A	4.5		4.5/7.8		4.9		4.9/7.8		6.0		6.0/7.8	
<b>Performance</b>													
EER	Btu/W.h W/W	9.2 2.70	←	9.0 2.64	←	8.9 2.61	←						
Moisture Removal	L/h	1.5		←		1.6		←		1.7		←	
Water Tank Volume	L	3.5		←		←		←		←		←	
Air Flow Volume	Indoor m <sup>3</sup> /h	420		←		460		←		480		←	
Noise Level	Hi/Med/Lo dB(A)	48/46/42		←		50/48/44		←		52/50/46		←	
<b>Net Dimension &amp; Weight</b>													
Net Dimension	WxHxD mm	460x840x325		←		←		←		←		←	
Packing Dimension	WxHxD mm	665x865x385		←		←		←		←		←	
Net/Gross Weight	kg	34/41		←		←		←		←		←	
<b>Applicable Area</b>													
	m <sup>2</sup>	12-20	←	16-22	←	18-25	←						
<b>Stuffing Quantity</b>													
20'/40'HQ	Set	100/290	←	←	←	←	←						

Remarks: 1.The above design and specifications are subject to change without prior notice for product improvement.  
2.The values given in the table for the noise level reflect the levels in anechoic chamber.